

SecurePenDrive
User Manual

Ver 1.00 - E

Table of Contents

1	New Features	3
2	Important Notice	3
3	Introduction to SecurePenDrive - D	3
3	Main Screen	5
4	Setup password	6
5	Change password	8
6	Disable / Remove password	9
7	Unlock device	10
8	Password hint	11
9	Format	12

New Features

1. Allows user to set own password. (*maximum 16 characters*)
2. Allows user to enter “Password Hint”, in case user forgot about their password
3. Automatically format the “Protected” part of the USB Disk Pro when enter wrong password 6 times.
4. New “Format” function, allows user to define the capacity of the protected area.
5. Two partitions but you can only see one partition at a time.

IMPORTANT

1. When using USB Disk Pro with the security application program, only **ONE** USB Disk Pro is allowed at once. **DO NOT PLUG IN TWO OR MORE USB DISK PRO AT THE SAME TIME.**

Mac OS Users Only

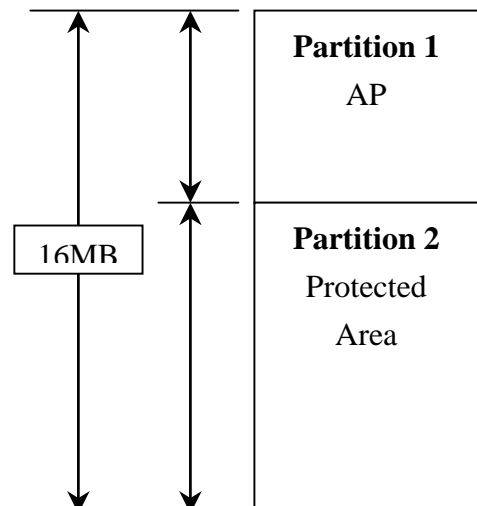
2. There is **NO** Security Application Program available for Mac OS's yet. Will provide the Security AP for Mac soon.
3. Mac OS 8.6 ~ 10.x You will only see the “unprotected” area in these Mac OS's.

Introduction to SecurePenDrive – E

The flash memory has been split into 2 parts.
(let's take a 16MB SecurePenDrive for example)

Partition 1 : This partition is where the security application program is stored and it's always open

Partition2 : This is the protected area.
You can only see this area when you “Unlock” the device.



Note

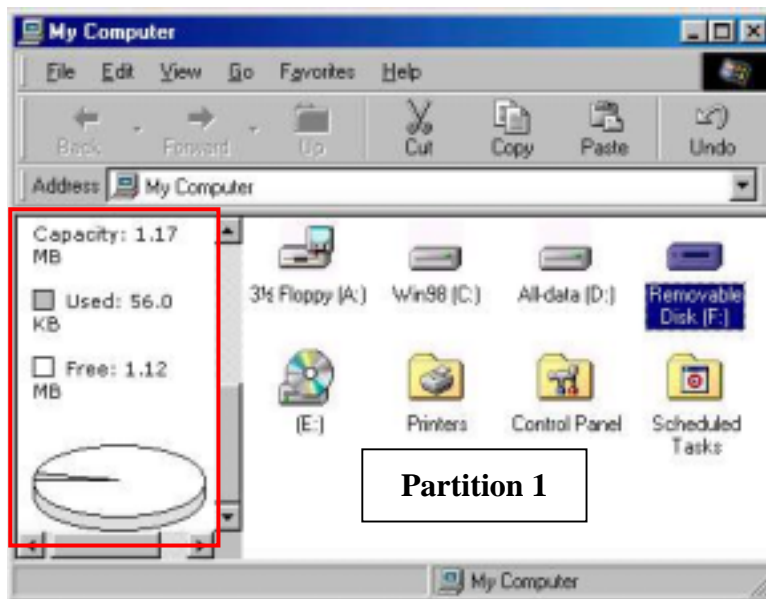
(a) With this kind of security function, user can only see one partition at a time.

Also, partition 2 can only be seen with the following condition.

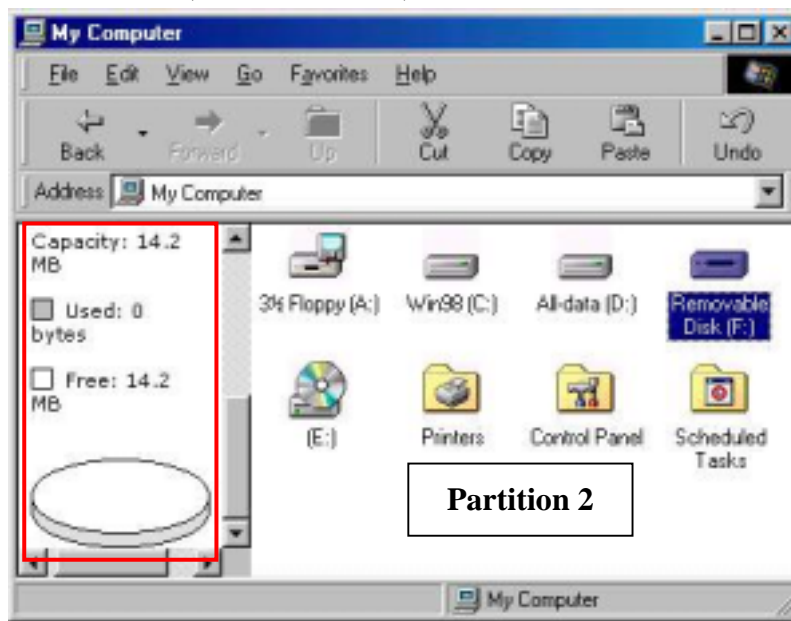
- (1) A password has been setup
- (2) Correct password has been entered and device is unlocked

Example

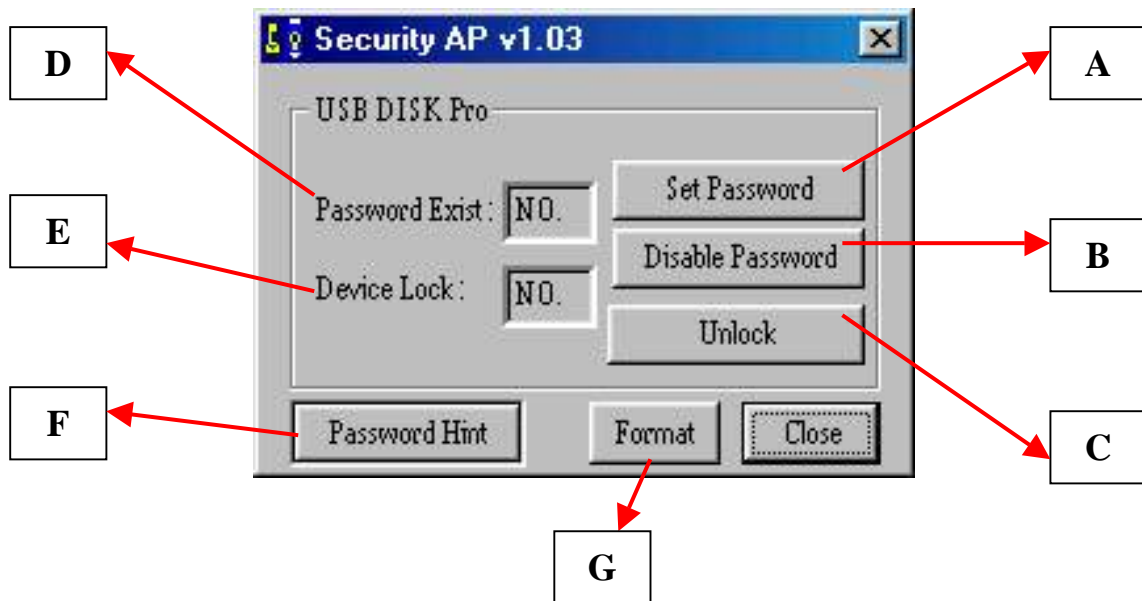
Before entering a password (unlock device), user will see “Partition 1” only.



When a password is entered (device unlocked), then user will see “Partition 2”



Main Screen



A Set up / Change password

B Disable / Remove password

C Unlock Device

D Password Exist Status – tells you whether a password has been set up or not

E Device Lock Status – tells you whether the device is locked or not

F Forgot Password ? – don't worry, let password hint remind you

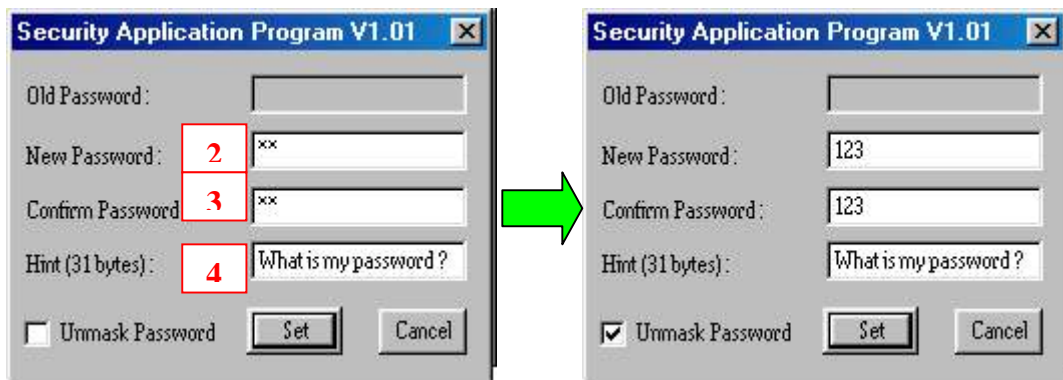
G Format – allow user to set the capacity of the “protected” area

Apparatus A – Setup Password

- (1) Press “Set Password” to setup password, you will see the following screen



- (2) Enter a password of your choice. (maximum 16 characters long)
(3) Confirm password by re-enter the password you set in (2).
(4) Enter a hint of your own, in case you forget your password. You can enter anything you want within 31 characters.



PS : Tick “Unmask Password” box to see what are you typing or what you have entered

- (5) Press “Set” to confirm changes. You will see the following message window pop up. This message window tells you, that the device will be automatically locked after you remove the device from USB port.



- (6) Once you have set up the password correctly, you will notice the change in “Password Exist” Status.



NOTE : When you remove the device from USB port and re-insert it again, the device will automatically be locked. If you try to access it, it will reply with some error message. (depending on the operating system, the error message will be different)



If you execute the Security AP, you will see that the device is LOCKED.



Apparatus A – Change Password

- (1) If you have already setup a password before, you can change the password you set.
Click “Change Password” to change.



- (2) Enter your old password
(3) Enter new password of your choice
(4) Confirm the new password by re-enter
(5) Change password hint if you wish.

PS : (i) Password Hint does not have to enter/change, if you don't want to use it or
You want to use the old hint.

(ii) Password Hint can only be edit with new password.

ie : Password Hint can not be edit/change without change of password.



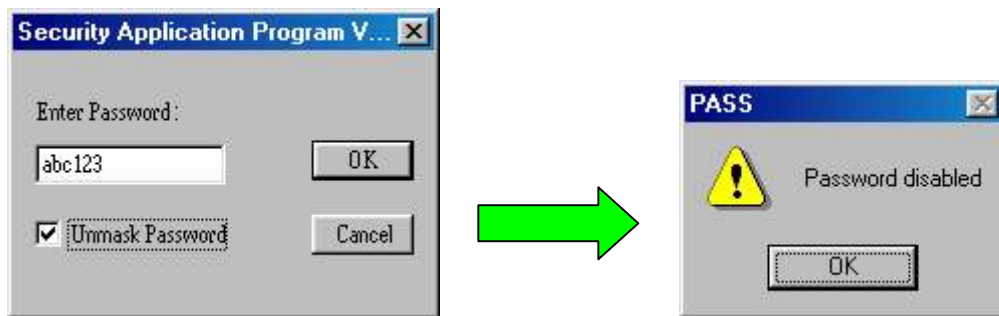
(iii) Use “Unmask Password” to see what you have typed.

Apparatus B – Disable / Remove Password

(1) If you no longer want to use the password, select “Disable Password” to remove it.



(2) Enter your password.



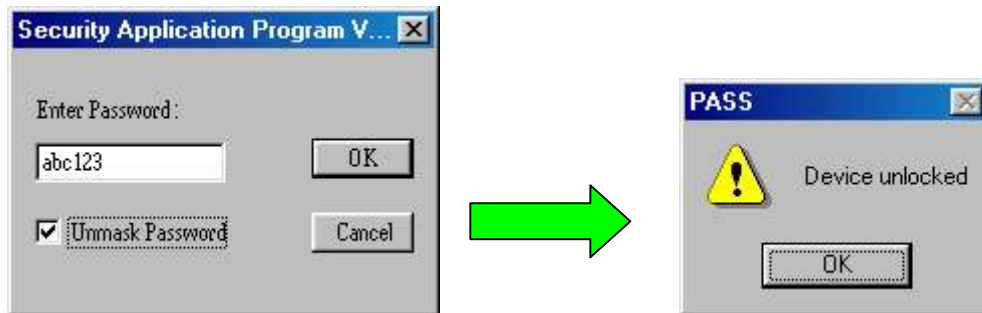
You only have SIX chances to enter password correctly. If you enter wrong password six times, it will automatically FORMAT the “protected” area of your SecurePenDrive. (All data will be lost)

Apparatus C – Unlock Device

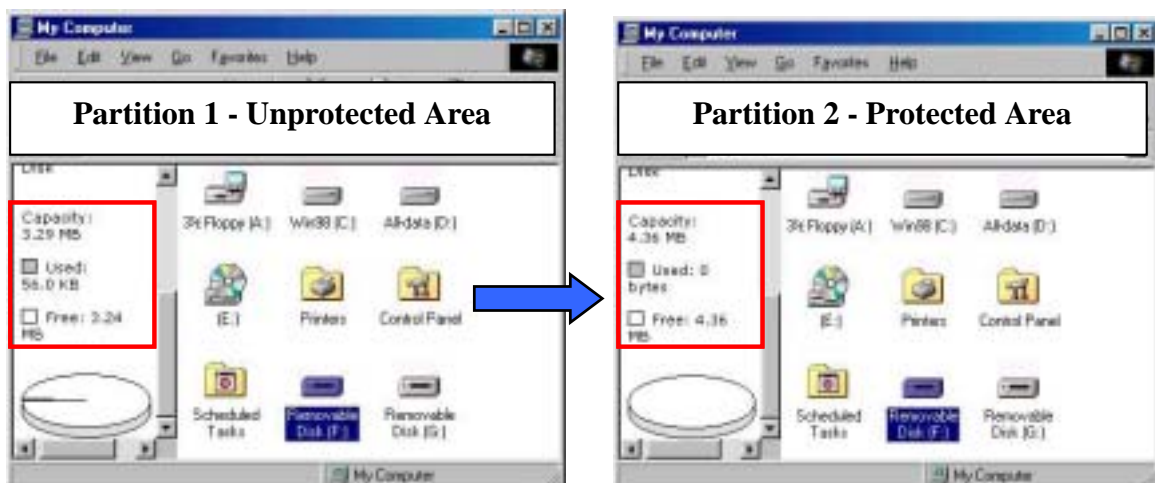
- (1) If you have setup a password, before you can access the data on the protected area, you must “Unlock” first. (enter password) Select “Unlock” to enter password.



- (2) Enter your password.



- (2) When device is “unlocked”, it will automatically switch to “Partition2” (the protected area)

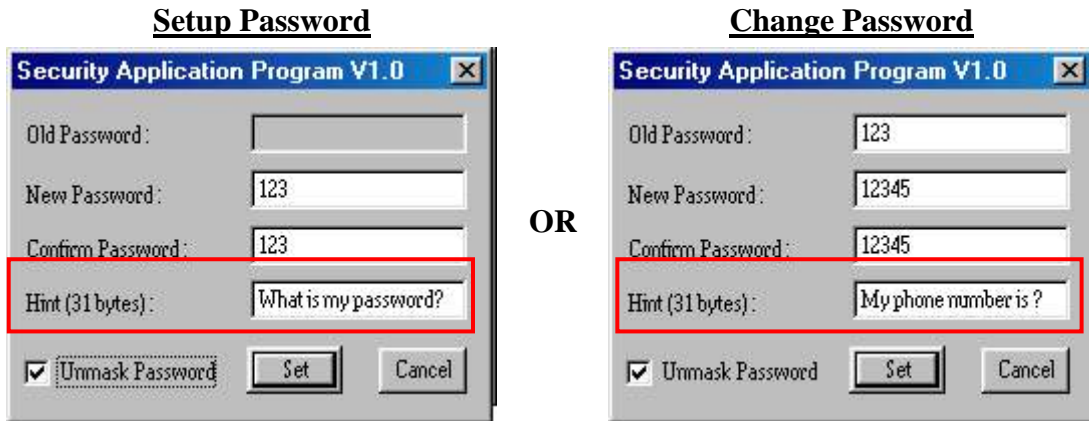


You only have SIX chances to enter password correctly. If you enter wrong password six times, it will automatically FORMAT the “protected” area of your SecurePenDrive. (All data will be lost)

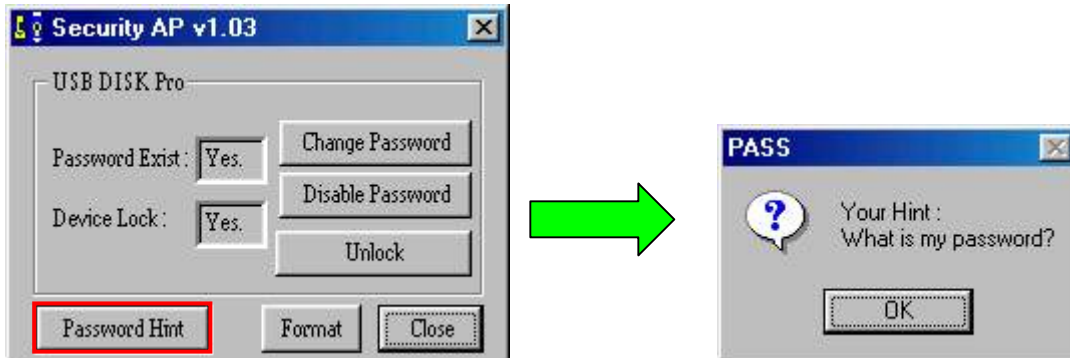
Apparatus F – Password Hint

As a human being, we all forget things from time to time. So when you setup/change your password, you can also edit a “Reminder” of your choice, in case you forget your password.

- (1) Enter a hint of your choice. (maximum 31 characters long)
You can edit the hint only when you



- (2) Press “Password Hint” any time to get your reminder.



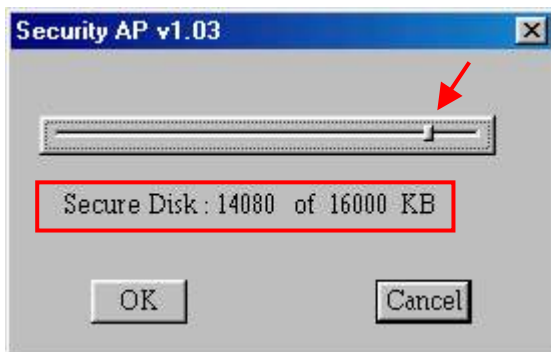
Apparatus G – Format



- (1) Press “Format” to adjust the capacities of the SecurePenDrive.



- (2) A warning message will show, telling user that if you proceed with formatting, any data on the SecurePenDrive will be lose.



- (3) Drag the bar to adjust the capacity of the “Protected” area.

eg: In this case, the protected area is a bit over 14MB and the unprotected area will be what ever is left. (as shown below)

