

Model	LE32A55*P	
Feature		
<ul style="list-style-type: none"> ▶ Digital-TV,RF,3-HDMI, 2Ext, 1Component,1-A/V,1-S-video,USB2.0(Wisalink), D-sub ▶ Brightness : 500cd/m² ▶ Dynamic Contrast Ratio : 15,000:1 ▶ Response time : 8ms ▶ Dynamic contrast, Super-PVA ▶ PIP(in HDMI1,2,3,Component1,PC mode and Sub picture is available TV, Ext1/2, AV) 		
Specifications		
Item	Description	
LCD Panel	TFT-LCD panel, RGB vertical stripe, SPVA mode, normaly black, 32-Inch viewable, 0.3635(H) x 0.36375(V) x 3 mm pixel pitch	
Scanning Frequency	Horizontal : 30 kHz ~ 80 kHz (Automatic) Vertical : 56 Hz ~ 75 Hz (Automatic)	
Display Colors	16.7 million colors	
Maximum resolution	Horizontal : 1920 Pixels Vertical : 1080 Pixels	
Input Signal	Analog 0.7 Vp-p ± 5% positive at 75Ω , internally terminated	
Input Sync Signal	H/V Separate, TTL, P. or N.	
Maximum Pixel Clock rate	310MHz	
Active Display Horizontal/Vertical	698.4(H) x 392.85(V) mm	
AC power voltage & Frequency	AC 110V ~ 240V, 50/60Hz	
Power Consumption	<180 W (< 1W, stand by)	
Dimensions Set (W x D x H)	31.53 x 9.92 x 22.58 inches (801.0 x 251.9 x 573.5mm)_with stand 28.88 x 3.11 x 20.69 inches (801.0 x 79 x 525.5mm)_without stand	
Weight (Set)	28.88lbs (13.1 kg)	
TV System	Tuning	Frequency Synthesize (Refer to detailed Frequency Table)
	System	DVB-T, PAL, SECAM, NT4.43
	Sound	BG, DK, NICAM, MPEG1
Environmental Considerations	Operating Temperature : 50°F ~ 104°F (10°C ~ 40°C) Operating Humidity : 10% ~ 80%, non-condensing Storage temperature : -13°F ~ 113°F (-25°C ~ 45°C) Storage Humidity : 5% ~ 95%, non-condensing	
Environmental Considerations	- MAX Internal speaker Out : Right => 10W, Left => 10W - BASS Control Range : -8 dB ~ + 8dB - TREBLE Control Range : -8 dB ~ +8 dB - Headphone Out : 10 mW MAX - Output Frequency : RF : 80 Hz ~ 15 kHz A/V : 80 Hz ~ 20 kHz	
Note: Anynet+, WISELINK		

2. Product specifications

Model	LE37A55*P	
Feature		
<ul style="list-style-type: none"> ▶ Digital-TV,RF,3-HDMI, 2Ext, 1Component,1-A/V,1-S-video,USB2.0(Wiselink), D-sub ▶ Brightness : 500cd/m² ▶ Dynamic Contrast Ratio : 15,000:1 ▶ Response time : 6.5ms ▶ Dynamic contrast, AMVA ▶ PIP(in HDMI1,2,3,Component1,PC mode and Sub picture is available TV, Ext1/2, AV) 		
Specifications		
Item	Description	
LCD Panel	TFT-LCD panel, RGB vertical stripe, SPVA mode, normally black, 37-Inch viewable, 0.42675(H) x 0.42675(V) x 3 mm pixel pitch	
Scanning Frequency	Horizontal : 30 kHz ~ 80 kHz (Automatic) Vertical : 56 Hz ~ 75 Hz (Automatic)	
Display Colors	16.7 million colors	
Maximum resolution	Horizontal : 1920 Pixels Vertical : 1080 Pixels	
Input Signal	Analog 0.7 Vp-p ± 5% positive at 75Ω , internally terminated	
Input Sync Signal	H/V Separate, TTL, P. or N.	
Maximum Pixel Clock rate	310MHz	
Active Display Horizontal/Vertical	819.36(H) x 460.89(V) mm	
AC power voltage & Frequency	AC 110V ~ 240V, 50/60Hz	
Power Consumption	<190 W (< 1W, stand by)	
Dimensions Set (W x D x H)	36.12 x11.81 x 25.58 inches (917.5 x 300 x 649.8mm)_with stand 36.12 x 3.26 x 23.82 inches (917.5 x 82.8 x 605.0mm)_without stand	
Weight (Set)	39.46lbs (17.9 kg)	
TV System	Tuning	Frequency Synthesize (Refer to detailed Frequency Table)
	System	DVB-T, PAL, SECAM, NT4.43
	Sound	BG, DK, NICAM, MPEG1
Environmental Considerations	Operating Temperature : 50°F ~ 104°F (10°C ~ 40°C) Operating Humidity : 10% ~ 80%, non-condensing Storage temperature : -13°F ~ 113°F (-25°C ~ 45°C) Storage Humidity : 5% ~ 95%, non-condensing	
Environmental Considerations	- MAX Internal speaker Out : Right => 10W, Left => 10W - BASS Control Range : -8 dB ~ + 8dB - TREBLE Control Range : -8 dB ~ +8 dB - Headphone Out : 10 mW MAX - Output Frequency : RF : 80 Hz ~ 15 kHz A/V : 80 Hz ~ 20 kHz	
Note: Anynet+, WISELINK		

2-3

2. Product specifications

Model	LE46A55*P	
Feature		
<div>▶ Digital-TV,RF,3-HDMI, 2Ext, 1Component,1-A/V,1-S-video,USB2.0(Wiselink), D-sub</div> <div>▶ Brightness : 500cd/m²</div> <div>▶ Dynamic Contrast Ratio : 30,000:1</div> <div>▶ Response time : 6.5ms</div> <div>▶ Dynamic contrast, AUO : AMVA, CMO : SMVA</div> <div>▶ PIP(in HDMI1,2,3,Component1,PC mode and Sub picture is available TV, Ext1/2, AV)</div>		
Specifications		
Item	Description	
LCD Panel	TFT-LCD panel, RGB vertical stripe, SPVA mode, normaly black, 46-Inch viewable, 0.53025(H) x 0.53025(V) x 3 mm pixel pitch	
Scanning Frequency	Horizontal : 30 kHz ~ 80 kHz (Automatic) Vertical : 56 Hz ~ 75 Hz (Automatic)	
Display Colors	16.7 million colors	
Maximum resolution	Horizontal : 1920 Pixels Vertical : 1080 Pixels	
Input Signal	Analog 0.7 Vp-p ± 5% positive at 75Ω , internally terminated	
Input Sync Signal	H/V Separate, TTL, P. or N.	
Maximum Pixel Clock rate	310MHz	
Active Display Horizontal/Vertical	1018.08(H) x 572.67(V) mm	
AC power voltage & Frequency	AC 110V ~ 240V, 50/60Hz	
Power Consumption	<240 W (< 1W, stand by)	
Dimensions Set (W x D x H)	44.39 x 11.02 x 30.18 inches (1127.4 x 279.9 x 766.5mm)_with stand 44.39 x 3.66 x 28.18 inches (1127.4 x 93 x 715.7mm)_without stand	
Weight (Set)	60.85lbs (27.6 kg)	
TV System	Tuning	Frequency Synthesize (Refer to detailed Frequency Table)
	System	DVB-T, PAL, SECAM, NT4.43
	Sound	BG, DK, NICAM, MPEG1
Environmental Considerations	Operating Temperature : 50°F ~ 104°F (10°C ~ 40°C) Operating Humidity : 10% ~ 80%, non-condensing Storage temperature : -13°F ~ 113°F (-25°C ~ 45°C) Storage Humidity : 5% ~ 95%, non-condensing	
Environmental Considerations	<div>- MAX Internal speaker Out : Right => 10W, Left => 10W</div> <div>- BASS Control Range : -8 dB ~ + 8dB</div> <div>- TREBLE Control Range : -8 dB ~ +8 dB</div> <div>- Headphone Out : 10 mW MAX</div> <div>- Output Frequency : RF : 80 Hz ~ 15 kHz</div> <div>A/V : 80 Hz ~ 20 kHz</div>	
Note: Anynet+, WISELINK		

2-5

2. Product specifications

CHANNEL FREQUENCY TABLE

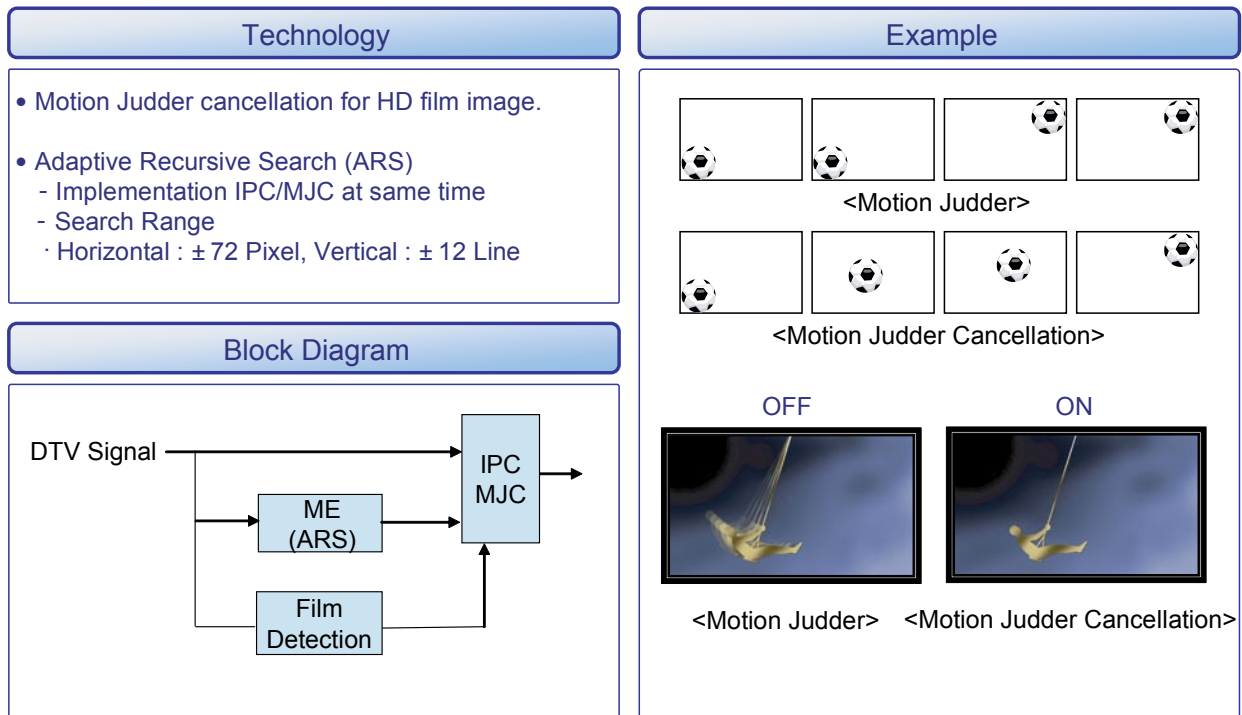
1. OUTPUT FREQUENCY : ANALOG fv:45.75MHz, fs:41.25MHz DIGITAL Fc:44MHz

2. TUNING STEP SIZE : FIRST PLL 250KHz SECOND PLL 62.5KHz



OSD	CH NO	AIR		BAND	CH NO	Cable STD		BAND	CH NO	Cable HRC		CH NO	Cable IRC	
		Air-DTV	Air-NTSC											
1	1								A-8	72.00		A-8	73.25	
2	2	57	55.25	V-L	2	55.25		V-L	2	54.00		2	55.25	
3	3	63	61.25	V-L	3	61.25		V-L	3	60.00		3	61.25	
4	4	69	67.25	V-L	4	67.25		V-L	4	66.00		4	67.25	
5	5	79	77.25	V-L	5	77.25		V-L	A-7	78.00		A-7	79.25	
6	6	85	83.25	V-L	6	83.25		V-L	A-6	84.00		A-6	85.25	
7	7	177	175.25	V-H	7	175.25		V-H	7	174.00		7	175.25	
8	8	183	181.25	V-H	8	181.25		V-H	8	180.00		8	181.25	
9	9	189	187.25	V-H	9	187.25		V-H	9	186.00		9	187.25	
10	10	195	193.25	V-H	10	193.25		V-H	10	192.00		10	193.25	
11	11	201	199.25	V-H	11	199.25		V-H	11	198.00		11	199.25	
12	12	207	205.25	V-H	12	205.25		V-H	12	204.00		12	205.25	
13	13	213	211.25	V-H	13	211.25		V-H	13	210.00		13	211.25	
14	14	473	471.25	UHF	A	121.25		MID	A	120.00		A	121.25	
15	15	479	477.25	UHF	B	127.25		MID	B	126.00		B	127.25	
16	16	485	483.25	UHF	C	133.25		MID	C	132.00		C	133.25	
17	17	491	489.25	UHF	D	139.25		MID	D	138.00		D	139.25	
18	18	497	495.25	UHF	E	145.25		MID	E	144.00		E	145.25	
19	19	503	501.25	UHF	F	151.25		MID	F	150.00		F	151.25	
20	20	509	507.25	UHF	G	157.25		MID	G	156.00		G	157.25	
21	21	515	513.25	UHF	H	163.25		MID	H	162.00		H	163.25	
22	22	521	519.25	UHF	I	169.25		MID	I	168.00		I	169.25	
23	23	527	525.25	UHF	J	217.25		SUPER	J	216.00		J	217.25	
24	24	533	531.25	UHF	K	223.25		SUPER	K	222.00		K	223.25	
25	25	539	537.25	UHF	L	229.25		SUPER	L	228.00		L	229.25	
26	26	545	543.25	UHF	M	235.25		SUPER	M	234.00		M	235.25	
27	27	551	549.25	UHF	N	241.25		SUPER	N	240.00		N	241.25	
28	28	557	555.25	UHF	O	247.25		SUPER	O	246.00		O	247.25	
29	29	563	561.25	UHF	P	253.25		SUPER	P	252.00		P	253.25	
30	30	569	567.25	UHF	Q	259.25		SUPER	Q	258.00		Q	259.25	
31	31	575	573.25	UHF	R	265.25		SUPER	R	264.00		R	265.25	
32	32	581	579.25	UHF	S	271.25		SUPER	S	270.00		S	271.25	
33	33	587	585.25	UHF	T	277.25		SUPER	T	276.00		T	277.25	
34	34	593	591.25	UHF	U	283.25		SUPER	U	282.00		U	283.25	
35	35	599	597.25	UHF	V	289.25		SUPER	V	288.00		V	289.25	
36	36	605	603.25	UHF	W	295.25		SUPER	W	294.00		W	295.25	
37	37	611	609.25	UHF	AA	301.25		HYPER	AA	300.00		AA	301.25	
38	38	617	615.25	UHF	BB	307.25		HYPER	BB	306.00		BB	307.25	
39	39	623	621.25	UHF	CC	313.25		HYPER	CC	312.00		CC	313.25	
40	40	629	627.25	UHF	DD	319.25		HYPER	DD	318.00		DD	319.25	
41	41	635	633.25	UHF	EE	325.25		HYPER	EE	324.00		EE	325.25	
42	42	641	639.25	UHF	FF	331.25		HYPER	FF	330.00		FF	331.25	
43	43	647	645.25	UHF	GG	337.25		HYPER	GG	336.00		GG	337.25	
44	44	653	651.25	UHF	HH	343.25		HYPER	HH	342.00		HH	343.25	
45	45	659	657.25	UHF	II	349.25		HYPER	II	348.00		II	349.25	
46	46	665	663.25	UHF	JJ	355.25		HYPER	JJ	354.00		JJ	355.25	
47	47	671	669.25	UHF	KK	361.25		HYPER	KK	360.00		KK	361.25	
48	48	677	675.25	UHF	LL	367.25		HYPER	LL	366.00		LL	367.25	
49	49	683	681.25	UHF	MM	373.25		HYPER	MM	372.00		MM	373.25	
50	50	689	687.25	UHF	NN	379.25		HYPER	NN	378.00		NN	379.25	
51	51	695	693.25	UHF	OO	385.25		HYPER	OO	384.00		OO	385.25	
52	52	701	699.25	UHF	PP	391.25		HYPER	PP	390.00		PP	391.25	
53	53	707	705.25	UHF	QQ	397.25		HYPER	QQ	396.00		QQ	397.25	
54	54	713	711.25	UHF	RR	403.25		HYPER	RR	402.00		RR	403.25	
55	55	719	717.25	UHF	SS	409.25		HYPER	SS	408.00		SS	409.25	
56	56	725	723.25	UHF	TT	415.25		HYPER	TT	414.00		TT	415.25	
57	57	731	729.25	UHF	UU	421.25		HYPER	UU	420.00		UU	421.25	
58	58	737	735.25	UHF	VV	427.25		HYPER	VV	426.00		VV	427.25	
59	59	743	741.25	UHF	WW	433.25		HYPER	WW	432.00		WW	433.25	
60	60	749	747.25	UHF	XX	439.25		HYPER	XX	438.00		XX	439.25	
61	61	755	753.25	UHF	YY	445.25		HYPER	YY	444.00		YY	445.25	
62	62	761	759.25	UHF	ZZ	451.25		HYPER	ZZ	450.00		ZZ	451.25	
63	63	767	765.25	UHF	AAA	457.25		HYPER	AAA	456.00		AAA	457.25	
64	64	773	771.25	UHF	BBB	463.25		HYPER	BBB	462.00		BBB	463.25	
65	65	779	777.25	UHF	CCC	469.25		ULTRA	CCC	468.00		CCC	469.25	
66	66	785	783.25	UHF	DDD	475.25		ULTRA	DDD	474.00		DDD	475.25	
67	67	791	789.25	UHF	EEE	481.25		ULTRA	EEE	480.00		EEE	481.25	
68	68	797	795.25	UHF	FFF	487.25		ULTRA	FFF	486.00		FFF	487.25	
69	69	803	801.25	UHF	GGG	493.25		ULTRA	GGG	492.00		GGG	493.25	

OSD	CH NO	AIR		BAND	CH NO	Cable STD	BAND	CH NO	Cable HRC	CH NO	Cable IRC
		Air-DTV	Air-NTSC								
70	70				HHH	499.25	ULTRA	HHH	498.00	HHH	499.25
71	71				III	505.25	ULTRA	III	504.00	III	505.25
72	72				JJJ	511.25	ULTRA	JJJ	510.00	JJJ	511.25
73	73				KKK	517.25	ULTRA	KKK	516.00	KKK	517.25
74	74				LLL	523.25	ULTRA	LLL	522.00	LLL	523.25
75	75				MMM	529.25	ULTRA	MMM	528.00	MMM	529.25
76	76				NNN	535.25	ULTRA	NNN	534.00	NNN	535.25
77	77				000	541.25	ULTRA	000	540.00	000	541.25
78	78				PPP	547.25	ULTRA	PPP	546.00	PPP	547.25
79	79				79	553.25	ULTRA	79	552.00	79	553.25
80	80				80	559.25	ULTRA	80	558.00	80	559.25
81	81				81	565.25	ULTRA	81	564.00	81	565.25
82	82				82	571.25	ULTRA	82	570.00	82	571.25
83	83				83	577.25	ULTRA	83	576.00	83	577.25
84	84				84	583.25	ULTRA	84	582.00	84	583.25
85	85				85	589.25	ULTRA	85	588.00	85	589.25
86	86				86	595.25	ULTRA	86	594.00	86	595.25
87	87				87	601.25	ULTRA	87	600.00	87	601.25
88	88				88	607.25	ULTRA	88	606.00	88	607.25
89	89				89	613.25	ULTRA	89	612.00	89	613.25
90	90				90	619.25	ULTRA	90	618.00	90	619.25
91	91				91	625.25	ULTRA	91	624.00	91	625.25
92	92				92	631.25	ULTRA	92	630.00	92	631.25
93	93				93	637.25	ULTRA	93	636.00	93	637.25
94	94				94	643.25	ULTRA	94	642.00	94	643.25
95	95				A-5	91.25	FM	A-5	90.00	A-5	91.25
96	96				A-4	97.25	FM	A-4	96.00	A-4	97.25
97	97				A-3	103.25	FM	A-3	102.00	A-3	103.25
98	98				A-2	109.25	MID	A-2	108.00	A-2	109.25
99	99				A-1	115.25	MID	A-1	114.00	A-1	115.25
100	100				100	649.25	ULTRA	100	648.00	100	649.25
101	101				101	655.25	ULTRA	101	654.00	101	655.25
102	102				102	661.25	ULTRA	102	660.00	102	661.25
103	103				103	667.25	ULTRA	103	666.00	103	667.25
104	104				104	673.25	ULTRA	104	672.00	104	673.25
105	105				105	679.25	ULTRA	105	678.00	105	679.25
106	106				106	685.25	ULTRA	106	684.00	106	685.25
107	107				107	691.25	ULTRA	107	690.00	107	691.25
108	108				108	697.25	ULTRA	108	696.00	108	697.25
109	109				109	703.25	ULTRA	109	702.00	109	703.25
110	110				110	709.25	ULTRA	110	708.00	110	709.25
111	111				111	715.25	ULTRA	111	714.00	111	715.25
112	112				112	721.25	ULTRA	112	720.00	112	721.25
113	113				113	727.25	ULTRA	113	726.00	113	727.25
114	114				114	733.25	ULTRA	114	732.00	114	733.25
115	115				115	739.25	ULTRA	115	738.00	115	739.25
116	116				116	745.25	ULTRA	116	744.00	116	745.25
.
.
125	125				125	799.25	ULTRA	125	798.00	125	799.25
.
.

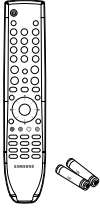
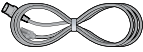

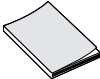
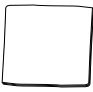
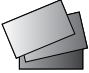
2-2. Movie Plus: MJC(Motion Judder Cancellation)



2-3. Spec Comparison to the Old Models

Model	Pearl (LE40A55*P)	Tulip(LE40M86BD)
Design		
Display Type	LCD TV	LCD TV
Built-in Tuner	O	O
Resolution	1920 x 1080	1920 x 1080
LCD Panel	TFT LCD Panel 50Hz	TFT LCD Panel 50Hz
Screen Size	32" / 37" / 40" / 46" / 52"	32" / 37" / 40" / 46" / 52"
Picture ratio	16 : 9	16 : 9
Dimensions (W x H x D)	39.24 x 11.81 x 27.01 inches_with stand 39.24 x 3.26 x 25.25 inches_without stand	44.4 x 12.8 x 31.0 inches_With Stand 44.4 x 4.2 x 28.8 inches_Without Stand
Weight	46.74lbs (set)	78.2 lbs (set)
Brightness	500 nit	500 nit
Dynamic Contrast Ratio	30,000 : 1	15,000:1
Picture Enhacer	DNle (FBE3)	DNle (FBE2)
Equalizer	5 Band	O
Movie Plus(MJC)	O	X
Surround Sound	3 Way SRS TruSurround Dolby Digital	2 Way SRS TruSurround Dolby Digital
Speaker Output	10W + 10W	10W + 10W
Antenna	1 (Cable/Air)	1 (Cable/Air)

2-4. Accessories

Product	Description	Code. No	Remark
	Remote Control & Batteries (AAA x 2)	BN59-00683A	Samsung Electronics Service center
	Power Cord	3903-000145	
	Cover-Bottom	32" : P1 (BN63-04207A), P3 (BN63-04207B) 37" : P1 (BN63-04208A), P3 (BN63-04437A) 40" : P1 (BN63-04352B), P3 (BN63-04437A) 46" : P1 (BN63-04353B), P3 (BN63-04374A) 52" : P1 (BN63-04354B), P3 (BN63-04374A)	
	Owner's Instructions	BN68-01409A	
	Cleaning Cloth	BN63-01798A	
	Warranty Card / Registration Card / Safety Guide Manual (Not available in all locations)	BN68-00514E, AA68-03575A~G, AA68-03242K	