

---

## Engine firmware upgrading

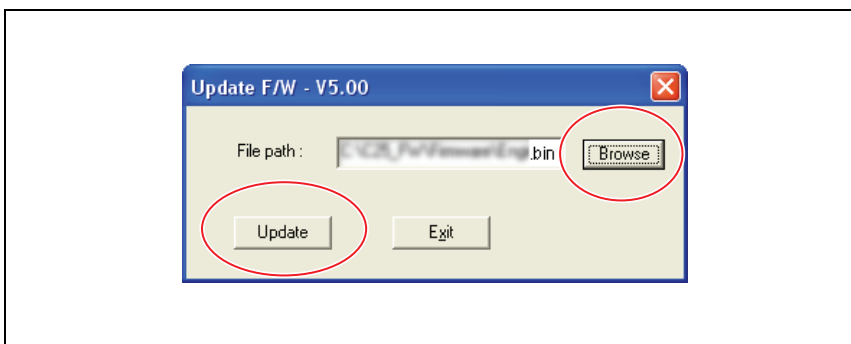
### Preparations for firmware upgrading

#### NOTE

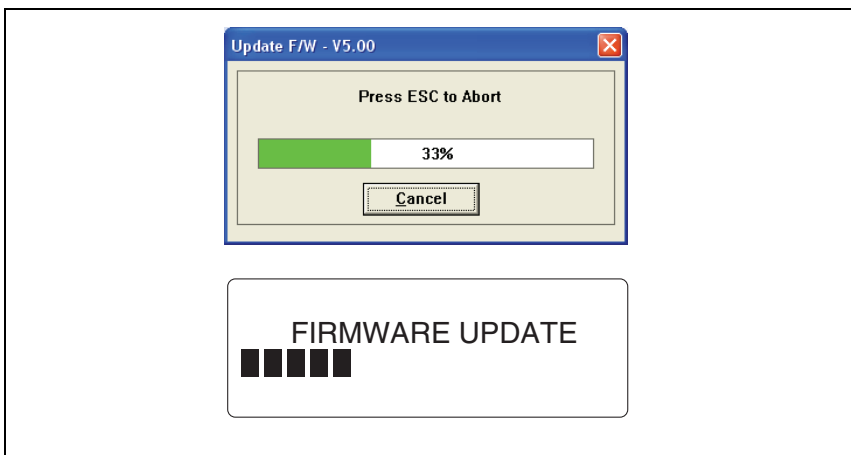
- Make sure that the scanner driver has been installed in the PC.
- Before updating the firmware, print Configuration Page to confirm the current Engine Firmware Version.

#### Upgrading procedure

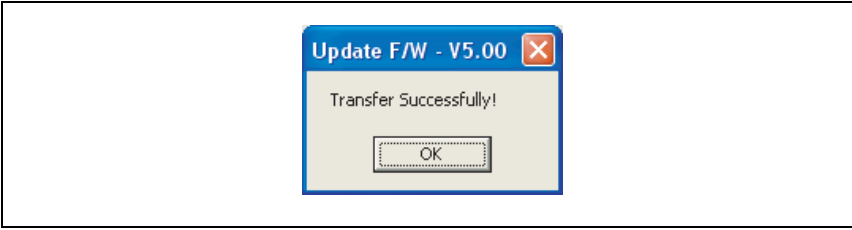
1. Connect the machine and PC using the USB cable.
2. Turn ON the machine's main switch.
3. Copy the firmware data and upgrading program in any arbitrary directory of the PC.
4. Double-click "UpdateFW.exe".
5. Click [Browse] and select File path of target file.
6. Click [Update].



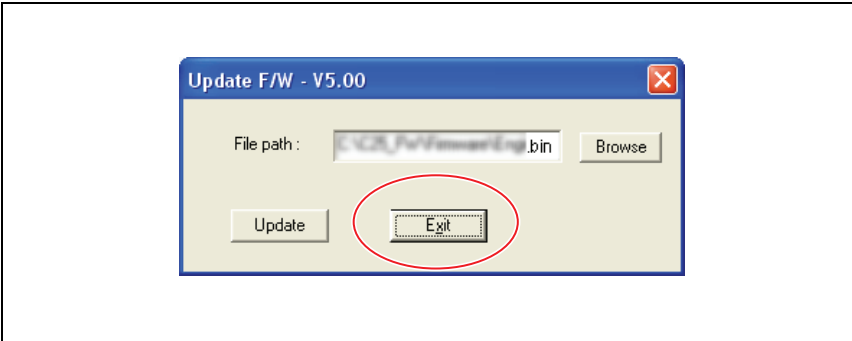
7. Firmware updating starts.



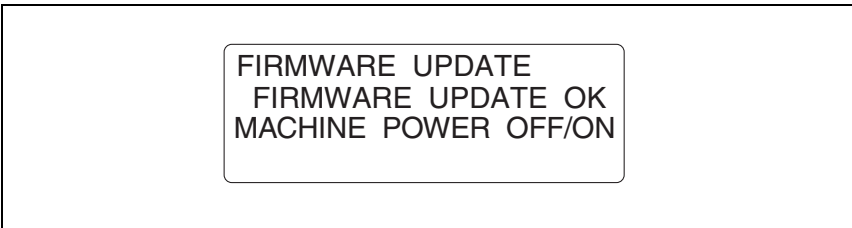
8. When [Transfer Successfully!] message appears on the screen, click [OK].



9. Click [Exit] to close the execution tool.



10. Confirm that [FIRMWARE UPDATE OK] message has been displayed, and turn OFF/ON the machine's main switch.



11. Print [CONFIGURATION PAGE] to confirm the Engine Firmware Version.